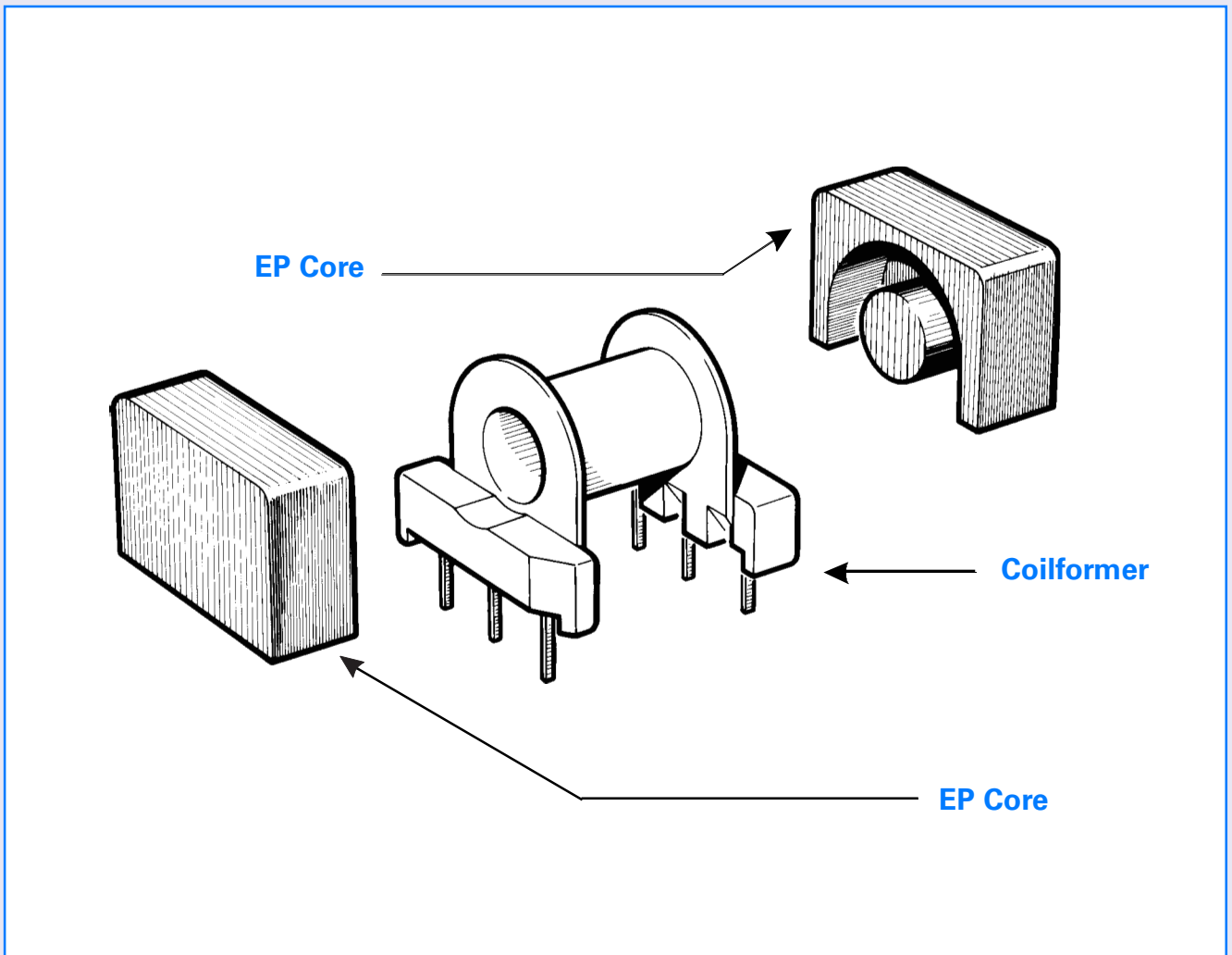


EP Series Components



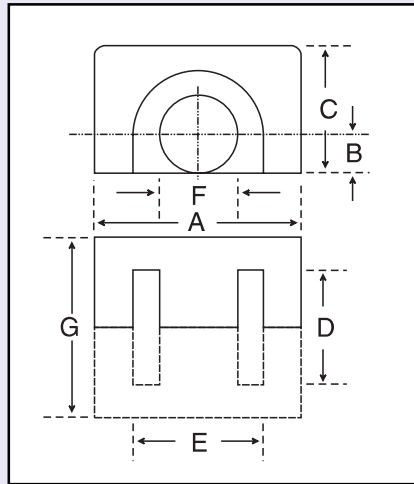
EP Cores

EP Cores have a particularly compact, low profile shape and offer excellent shielding from adjacent cores due to the winding being almost completely surrounded by the ferrite core. This allows for high packing densities on printed circuit boards. Originally designed for broadband, small power transformers and signal transmission applications, EP cores are well suited for the demanding properties required from modern electronic components.

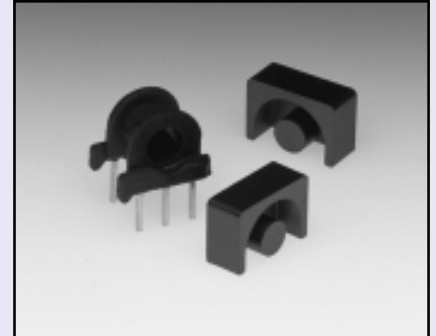
EP Cores are available in a range of sizes and materials together with their associated coilformers.

Core Dimensions (mm)

| | | | |
|----------|----------------|----------|----------------|
| A | 9.00 - 9.40 | F | 3.20 - 3.40 |
| B | 1.60 - 1.80 | G | 7.30 - 7.50 |
| C | 6.20 - 6.50 | | |
| D | 5.00 - 5.40 | | |
| E | 7.20 - 7.60 | | |



EP 7 32-810-



Core Parameters

In accordance with IEC Document 60205.

| Parameter | Σ/A | Effective Length | Effective Area | Minimum Area | Effective Volume |
|-----------|----------------------|------------------|----------------------|---------------------|-----------------------|
| Symbol | C_1 | l_e | A_e | A_{min} | V_e |
| Value | 1.52mm ⁻¹ | 15.70mm | 10.30mm ² | 8.50mm ² | 162.00mm ³ |

Electrical Specification

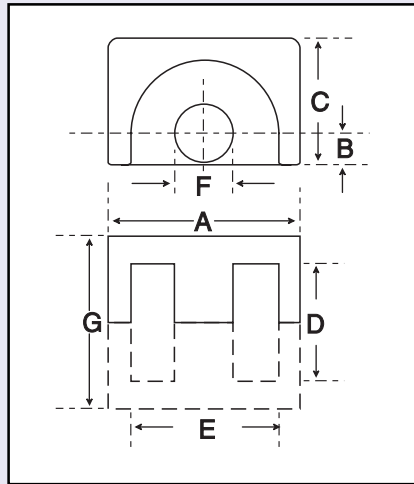
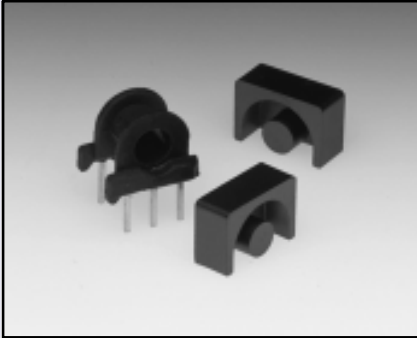
| Material | A_L Value | Tolerance | Gap Length | Eff. Permeability | Part Number |
|----------|-------------|-----------|------------|-------------------|-------------|
| F5A | 1200 | +30/-20% | - | 1450 | 32-810-49 |
| F9 | 2000 | +30/-20% | - | 2420 | 32-810-36 |
| F10 | 3400 | +30/-20% | - | 4115 | 32-810-37 |
| F39 | 5200 | +40/-30% | - | 6290 | 32-810-39 |

Part numbers refer to half cores. Other material grades and gap lengths may be available on request.

Bobbins/Coil Formers

| Mounting | No. of Sections | Pins | Part Number |
|------------|-----------------|------|-------------|
| Horizontal | 1 | 6 | 59-810-64 |
| Horizontal | 2 | 6 | 59-811-64 |

EP 10 32-820-



Core Dimensions (mm)

| | | | |
|---|---------------|---|---------------|
| A | 11.20 - 11.80 | F | 3.15 - 3.45 |
| B | 1.75 - 1.95 | G | 10.20 - 10.40 |
| C | 7.45 - 7.85 | | |
| D | 7.20 - 7.60 | | |
| E | 9.20 - 9.60 | | |

Core Parameters

In accordance with IEC Document 60205.

| Parameter | Σ/A | Effective Length | Effective Area | Minimum Area | Effective Volume |
|-----------|----------------------|------------------|--------------------|-------------------|---------------------|
| Symbol | C_1 | l_e | A_e | A_{min} | V_e |
| Value | 1.70mm^{-1} | 19.20mm | 11.30mm^2 | 8.50mm^2 | 217.00mm^3 |

Electrical Specification

| Material | A_L Value | Tolerance | Gap Length | Eff. Permeability | Part Number |
|----------|-------------|-----------|------------|-------------------|-------------|
| F5A | 1063 | +30/-20% | - | 1435 | 32-820-49 |
| F9 | 2000 | +30/-20% | - | 2700 | 32-820-36 |
| F10 | 3200 | +30/-20% | - | 4330 | 32-820-37 |
| F39 | 4800 | +40/-30% | - | 6495 | 32-820-39 |

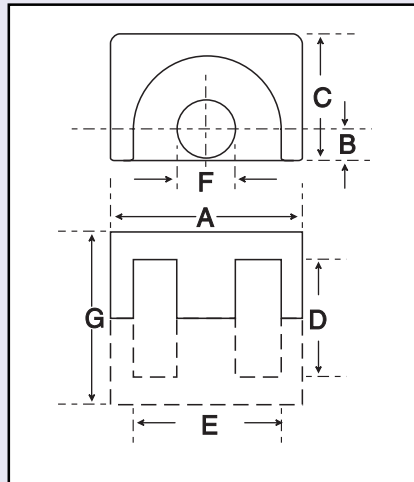
Part numbers refer to half cores. Other material grades and gap lengths may be available on request.

Bobbins/Coil Formers

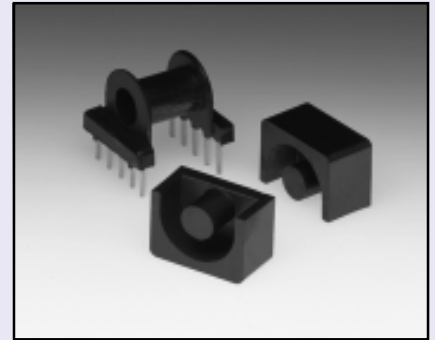
| Mounting | No. of Sections | Pins | Part Number |
|------------|-----------------|------|-------------|
| Horizontal | 1 | 8 | 59-820-64 |
| Horizontal | 2 | 8 | 59-821-64 |

Core Dimensions (mm)

| | | | |
|----------|------------------|----------|------------------|
| A | 12.20 - 12.80 | F | 4.20 - 4.50 |
| B | 2.30 - 2.50 | G | 12.70 - 13.00 |
| C | 8.60 - 9.00 | | |
| D | 9.00 - 9.40 | | |
| E | 9.70 - 10.30 | | |



EP 13 32-800-



Core Parameters

In accordance with IEC Document 60205.

| Parameter | Σ/A | Effective Length | Effective Area | Minimum Area | Effective Volume |
|-----------|----------------------|------------------|----------------------|----------------------|-----------------------|
| Symbol | C_1 | l_e | A_e | A_{min} | V_e |
| Value | 1.24mm ⁻¹ | 24.20mm | 19.50mm ² | 14.90mm ² | 472.00mm ³ |

Electrical Specification

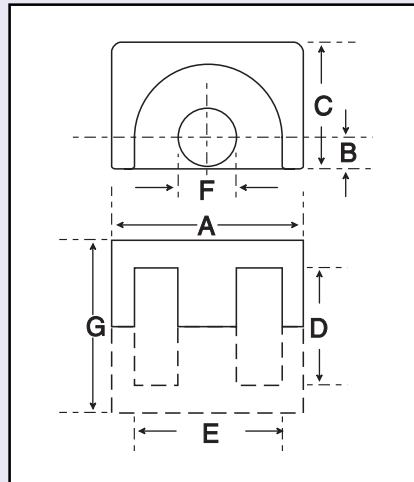
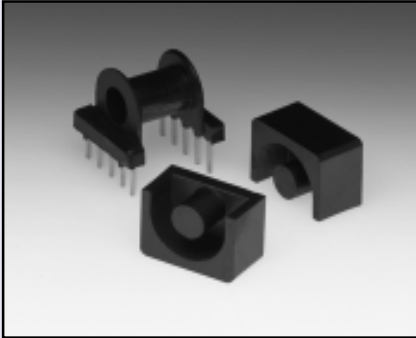
| Material | A_L Value | Tolerance | Gap Length | Eff. Permeability | Part Number |
|----------|-------------|-----------|------------|-------------------|-------------|
| F44 | 1235 | +30/-20% | - | 1220 | 32-800-44 |
| F9 | 2800 | +30/-20% | - | 2760 | 32-800-36 |
| F10 | 4400 | +30/-20% | - | 4340 | 32-800-37 |
| F39 | 7000 | +40/-30% | - | 6905 | 32-800-39 |

Part numbers refer to half cores. Other material grades and gap lengths may be available on request.

Bobbins/Coil Formers

| Mounting | No. of Sections | Pins | Part Number |
|------------|-----------------|------|-------------|
| Horizontal | 1 | 10 | 59-805-64 |
| Horizontal | 2 | 10 | 59-806-64 |

EP 17 32-830-



Core Dimensions (mm)

| | | | |
|----------|---------------|----------|---------------|
| A | 17.50 - 18.50 | F | 5.50 - 5.85 |
| B | 3.05 - 3.45 | G | 16.60 - 17.00 |
| C | 10.75 - 11.25 | | |
| D | 11.20 - 11.80 | | |
| E | 11.50 - 12.50 | | |

Core Parameters

In accordance with IEC Document 60205.

| Parameter | Σ/A | Effective Length | Effective Area | Minimum Area | Effective Volume |
|-----------|----------------------|------------------|----------------------|----------------------|-----------------------|
| Symbol | C_1 | l_e | A_e | A_{min} | V_e |
| Value | 0.84mm ⁻¹ | 28.50mm | 33.90mm ² | 25.50mm ² | 966.00mm ³ |

Electrical Specification

| Material | A_L Value | Tolerance | Gap Length | Eff. Permeability | Part Number |
|----------|-------------|-----------|------------|-------------------|-------------|
| F44 | 2130 | +30/-20% | - | 1425 | 32-830-44 |
| F9 | 4310 | +30/-20% | - | 2880 | 32-830-36 |
| F10 | 6875 | +30/-20% | - | 4595 | 32-830-37 |
| F39 | 11400 | +40/-30% | - | 7620 | 32-830-39 |

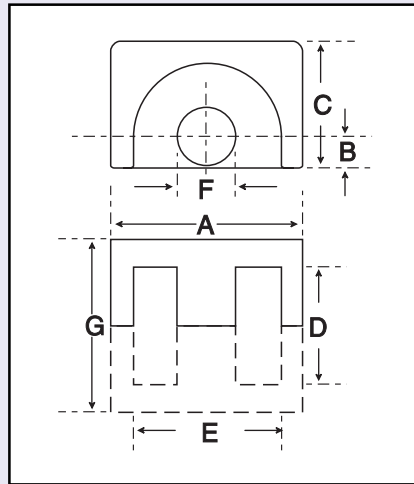
Part numbers refer to half cores. Other material grades and gap lengths may be available on request.

Bobbins/Coil Formers

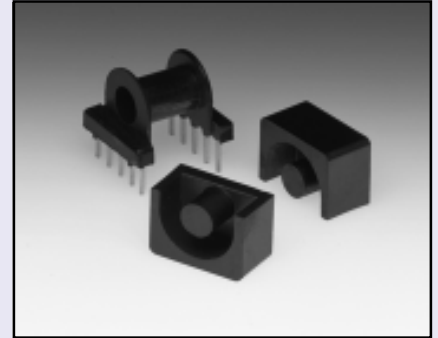
| Mounting | No. of Sections | Pins | Part Number |
|------------|-----------------|------|-------------|
| Horizontal | 1 | 8 | 59-830-64 |
| Horizontal | 2 | 8 | 59-831-64 |

Core Dimensions (mm)

| | | | |
|----------|------------------|----------|------------------|
| A | 23.50 - 24.50 | F | 8.50 - 9.00 |
| B | 4.30 - 4.70 | G | 21.20 - 21.60 |
| C | 14.60 - 15.30 | | |
| D | 14.00 - 14.60 | | |
| E | 16.10 - 16.90 | | |



EP 20 32-840-



Core Parameters

In accordance with IEC Document 60205.

| Parameter | Σ/A | Effective Length | Effective Area | Minimum Area | Effective Volume |
|-----------|----------------------|------------------|----------------------|----------------------|------------------------|
| Symbol | C_1 | l_e | A_e | A_{min} | V_e |
| Value | 0.51mm ⁻¹ | 40.00mm | 78.00mm ² | 60.00mm ² | 3120.00mm ³ |

Electrical Specification

| Material | A_L Value | Tolerance | Gap Length | Eff. Permeability | Part Number |
|----------|-------------|-----------|------------|-------------------|-------------|
| F9 | 6700 | +30/-20% | - | 2720 | 32-840-36 |
| F10 | 11200 | +30/-20% | - | 4545 | 32-840-37 |
| F39 | 18700 | +40/-30% | - | 7590 | 32-840-39 |

Part numbers refer to half cores. Other material grades and gap lengths may be available on request.

Bobbins/Coil Formers

| Mounting | No. of Sections | Pins | Part Number |
|------------|-----------------|------|-------------|
| Horizontal | 1 | 10 | 59-840-64 |
| Horizontal | 2 | 10 | 59-841-64 |